



YUKON



Fact Sheet

Test your knowledge! See if you can fill in the blanks below.

1. Yukon is Canada's westernmost _____.
2. The capital city of the Yukon is _____.
3. Yukon's official bird is the _____.
5. Yukon's official flower is the _____.



Raven

Fireweed

Territory

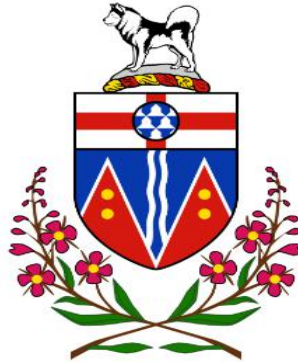
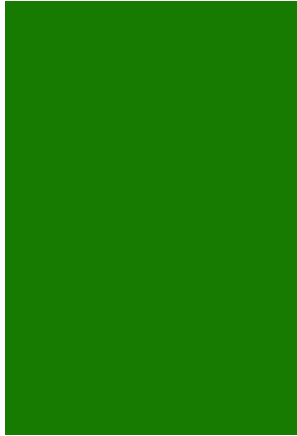
Whitehorse

Mapping Y.T.

Label the capital city of the territory. Next, research Yukon's topography and colour the map accordingly!



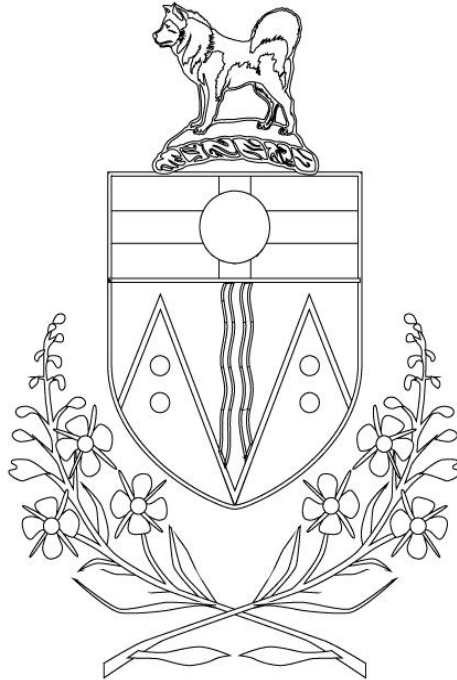
Fly the Flag



The official flag of the Yukon was introduced 1 March, 1968. The flag's key features include the Yukon's Coat of Arms with:

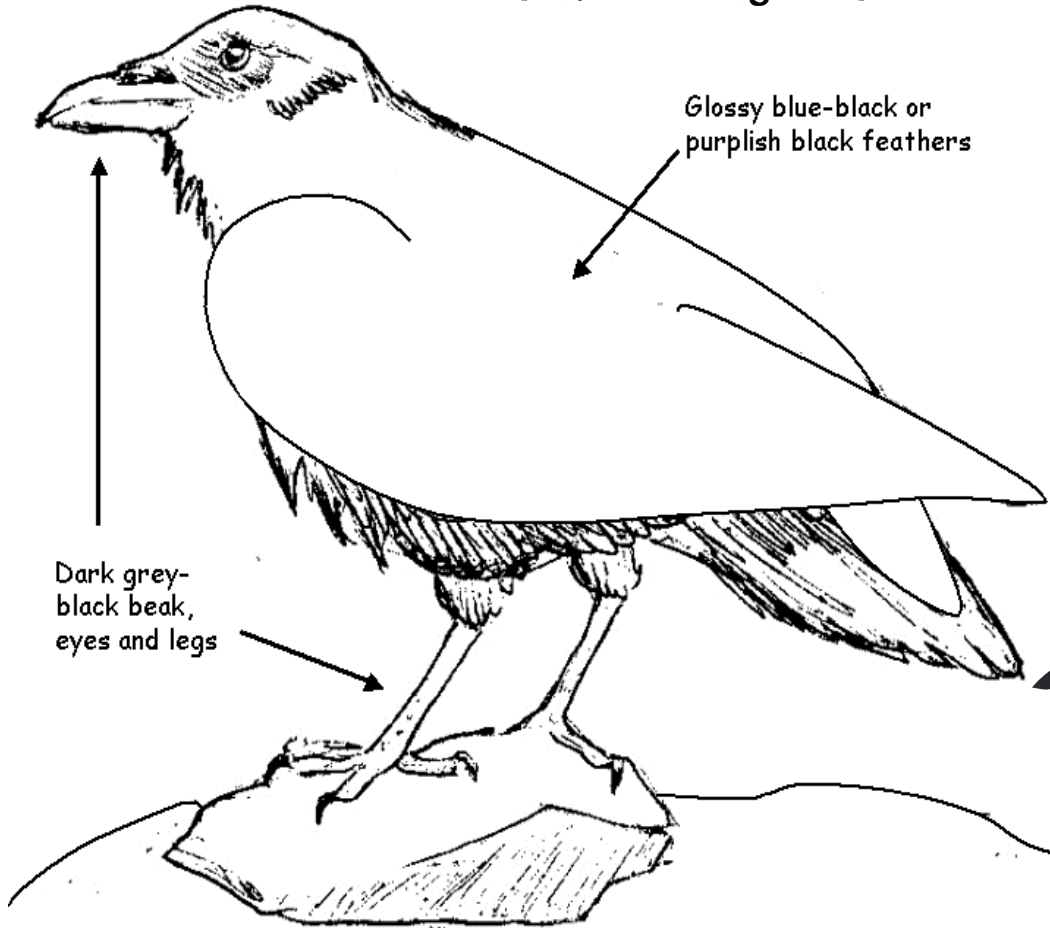
- Wreath of fireweed (floral emblem of the territory)
- Malamute sled dog (common Yukon work dog) on mound of snow
- Cross of St. George for England with roundel with pattern of fur
- two wavy lines: represent Yukon's rivers
- Two red triangles (represent Yukon's mountains) with gold circles (represent Yukon's great mineral resources)

Your turn! Recreate the Yukon's official flag, using the flag above to guide you.



Provincial Fauna

The official bird of the Yukon is the Raven.
Colour the image below!



Provincial Flora

The official flower of the Yukon is Fireweed. Colour the image below!



YUKON

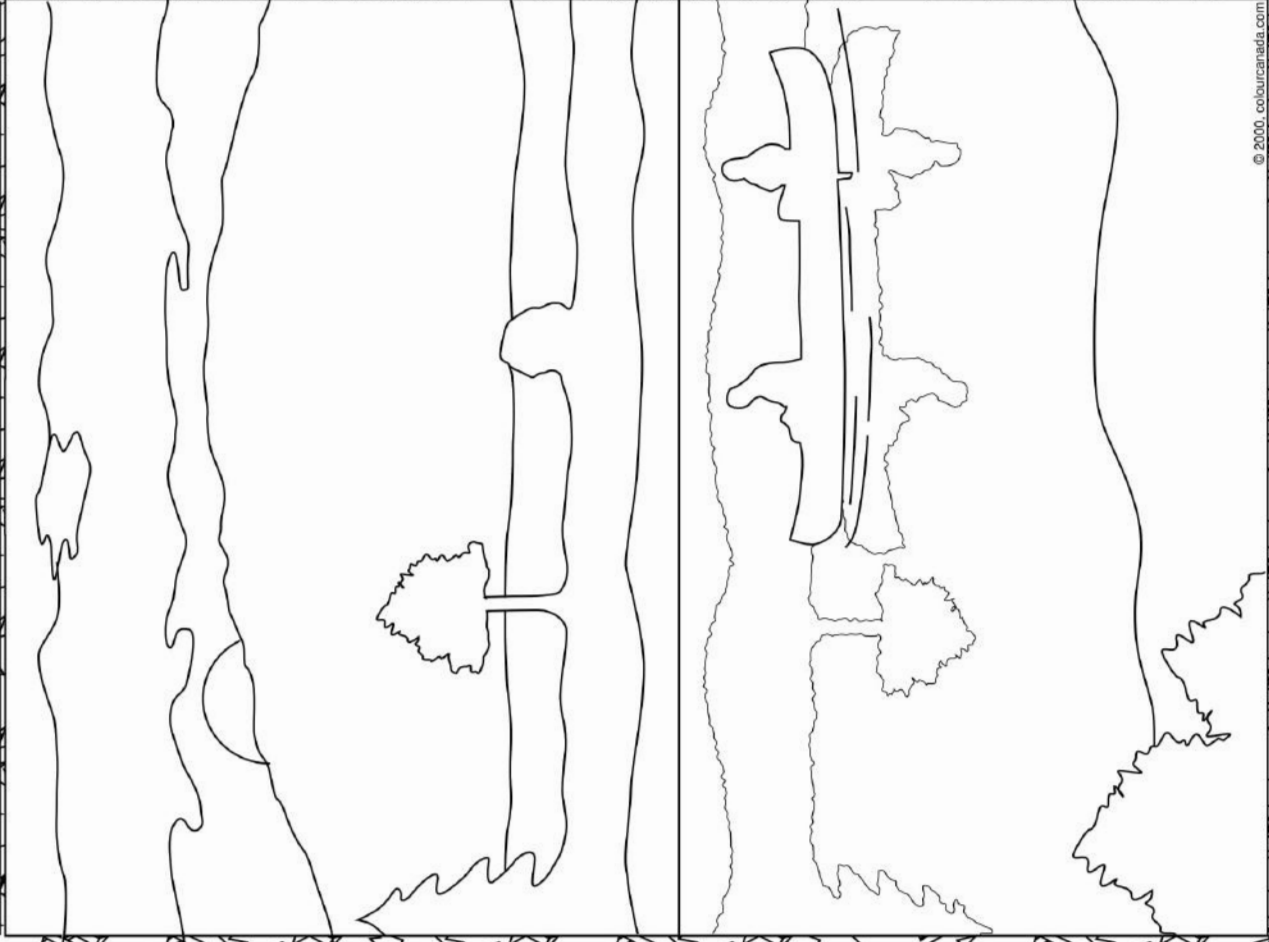
in

Colour



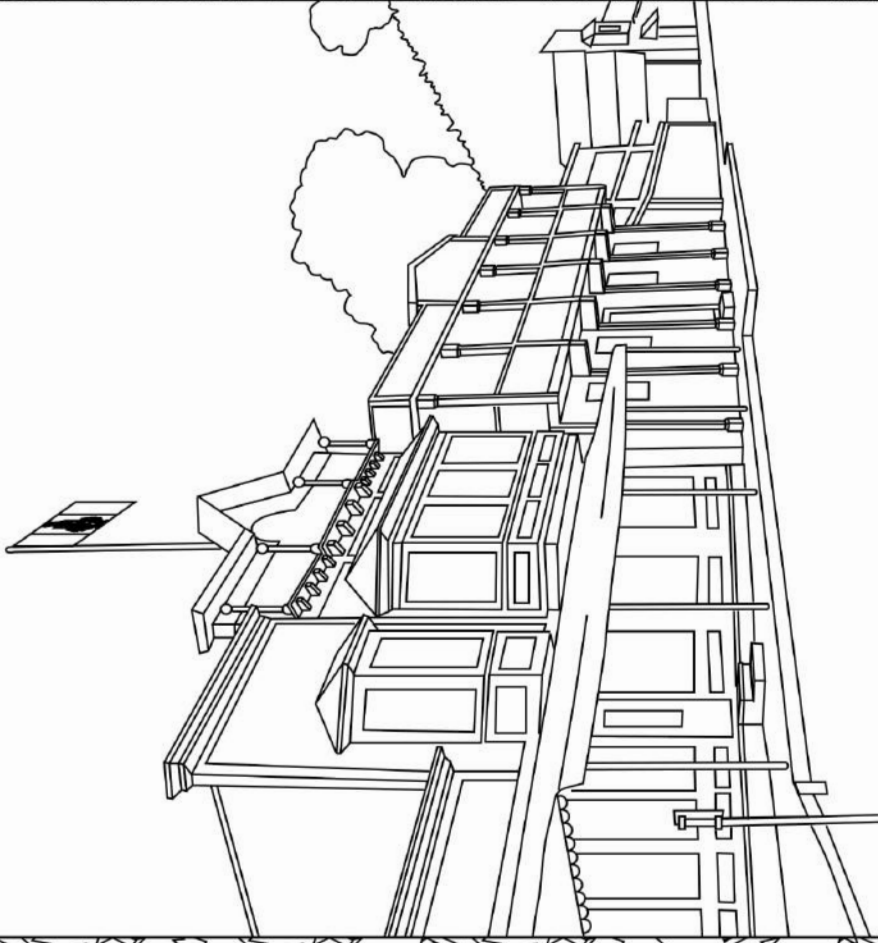


Yukon Parks: White Klutane National Park is a UNESCO World Heritage Site, boasting Canada's highest mountains, and the largest non-polar icefield in the world, most of the territory is an unspoiled paradise for hikers, canoeists and eco-tourists alike.





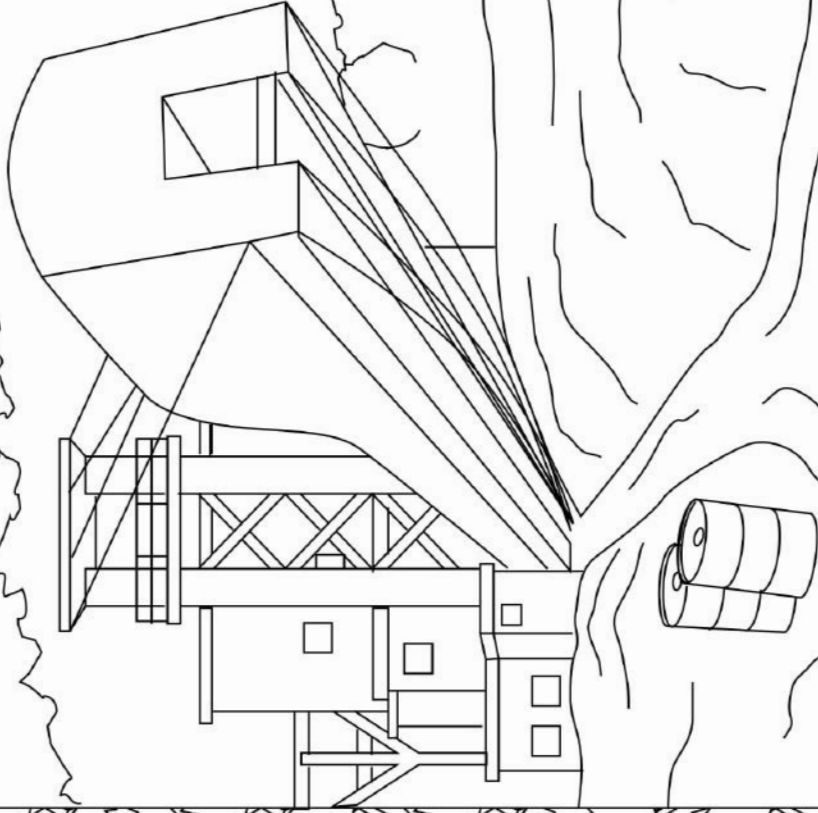
Dawson City: Dawson City has not been a booming town since the end of the gold rush at the turn of the century. At one time it was Canada's largest western city with 40,000 inhabitants. Now, it's amazing architecture reminds us of what the frontier was like 100 years ago.



© 2000, colourcanada.com



Dredge: During the Klondike gold rush of 1896, thousands of miners descended on the region in hopes of striking it rich. Interpretive activities include tours of Dawson City's historic buildings, Dredge No. 4 tours, Bear Creek Complex tours, and numerous special events.



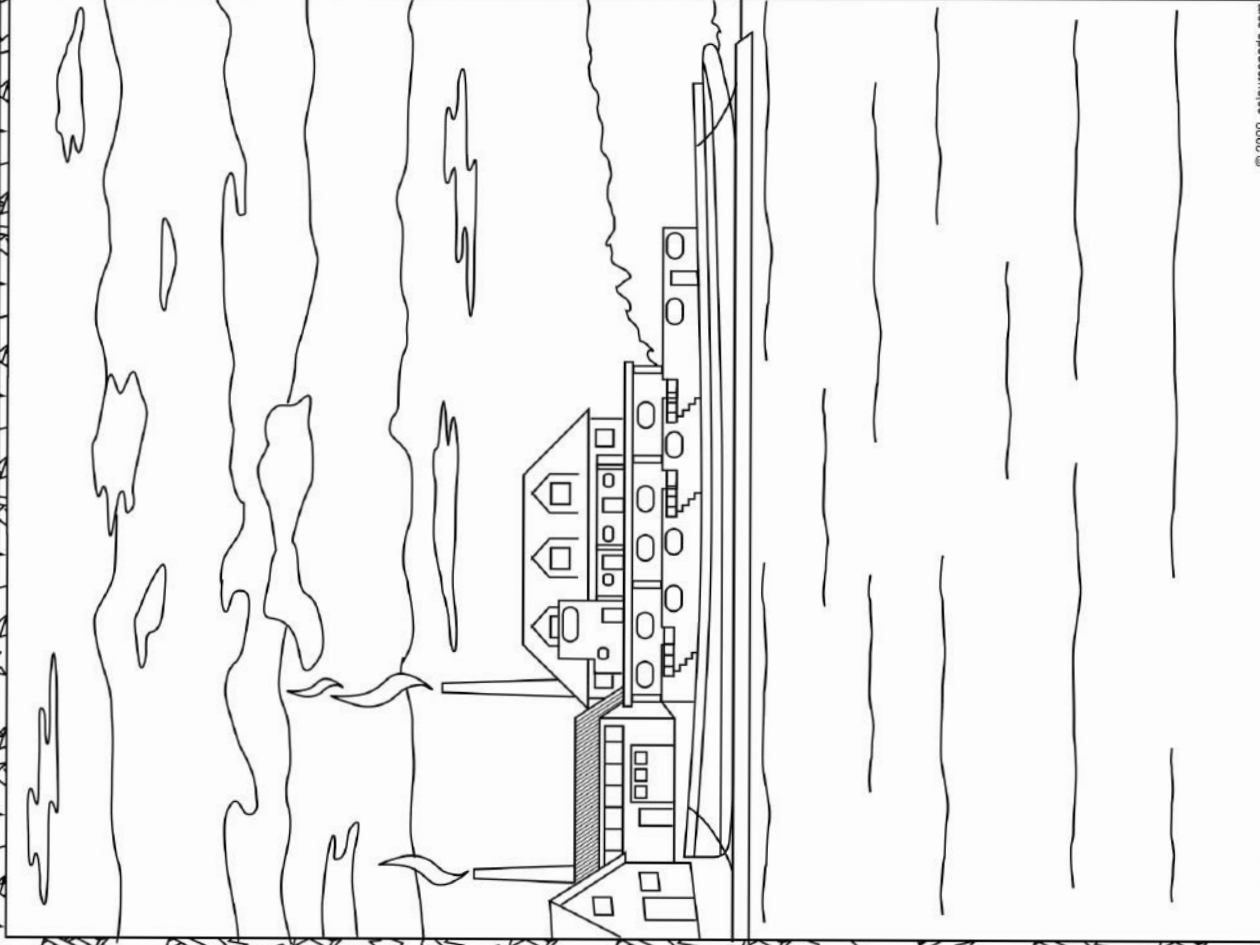


Fireweed : The fireweed is Yukon's floral emblem. This tall plant is recognizable because of its bright colour, and its unique shape. Fireweed is one of the first plants to grow after a forest fire, which is how it got its name.





SS Klondike: Riverboats brought virtually all goods and people into the region. The S.S. Klondike was first built in 1929 and sank in 1936. It was rebuilt and launched in the spring of 1937 as the S.S. Klondike II, the largest and last of the sternwheelers.



© 2000, colourcanada.com



Yukon's Flag: The green represents the Taiga forests, the white, snow and the blue, the sea. The provincial flower, the fireweed, and the Cross of St. George on the top with wavy blue and white lines for creeks and rivers. The red spires represent the Yukon mountains, gold discs stand for mineral wealth. The malamute dog on top symbolizes loyalty, stamina and strength.

