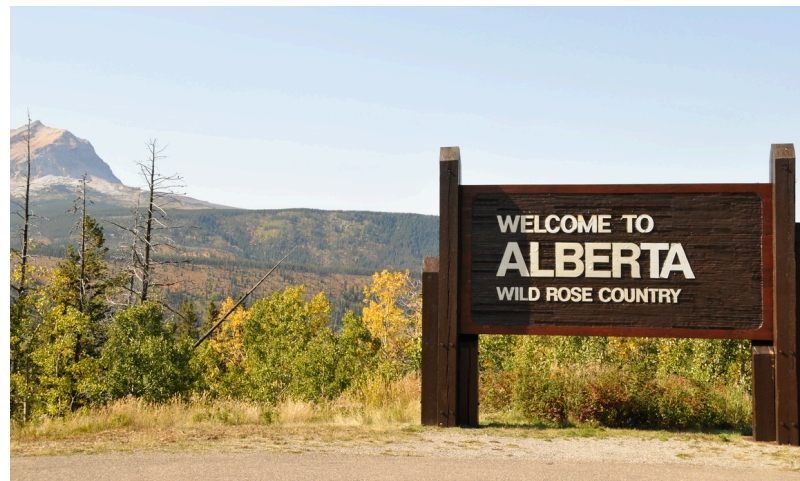




LET'S LEARN ABOUT CANADA

ALBERTA



Fact Sheet

Test your knowledge! See if you can fill in the blanks below.

1. Alberta is one of Canada's three _____ provinces.
2. _____ is Alberta's capital city.
3. The _____ _____ lie on Alberta's western border.
4. Alberta's provincial bird is the _____.
5. Alberta's provincial flower is the _____.



Rocky

Edmonton

Rose

Mountains

Wild

Owl

Prairie

Great Horn

Mapping Alberta

Label the capital city of the province. Next, research Alberta's topography and colour the map accordingly!



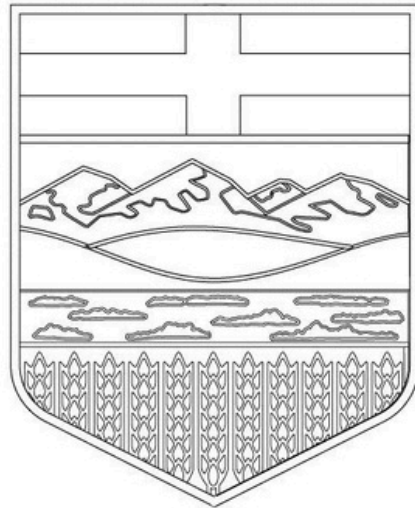
Fly the Flag



The provincial flag of Alberta was introduced on June 1, 1968. The flag's key features include:

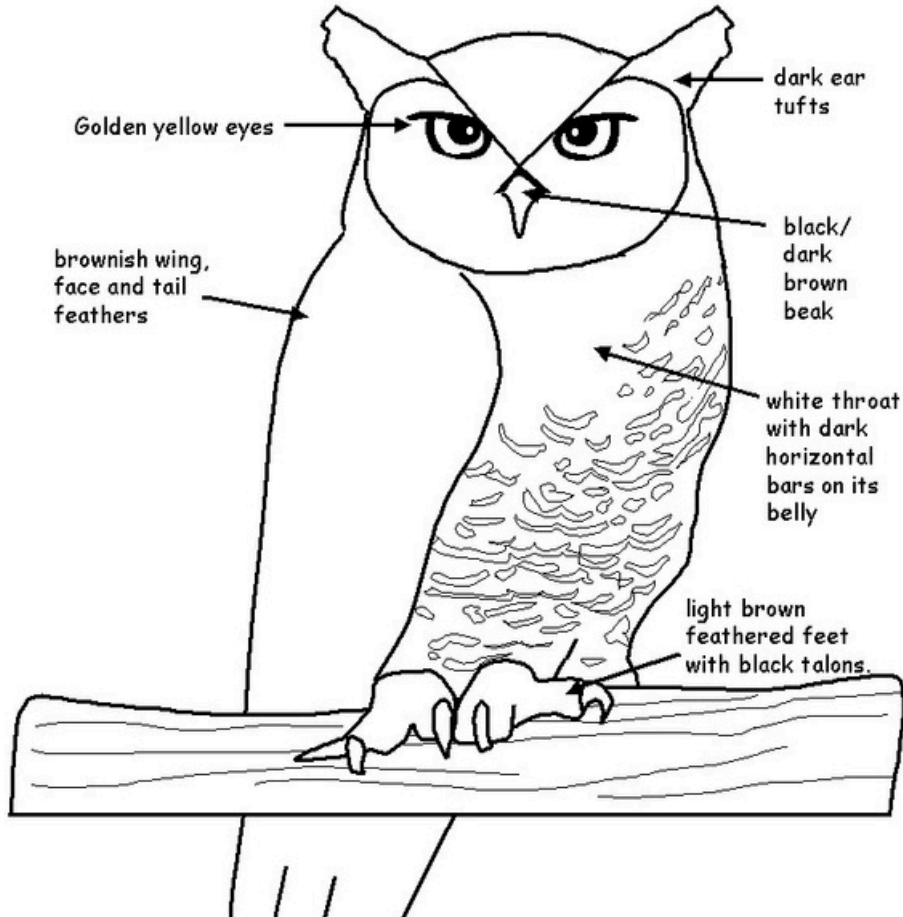
- Alberta provincial shield (center): wheat fields, rough prairie land, foothills and Rocky Mountains under blue sky and Saint George's Cross.
* *Saint George's Cross represents the English settlement of the region*

Your turn! Recreate Alberta's provincial flag, using the flag above to guide you.



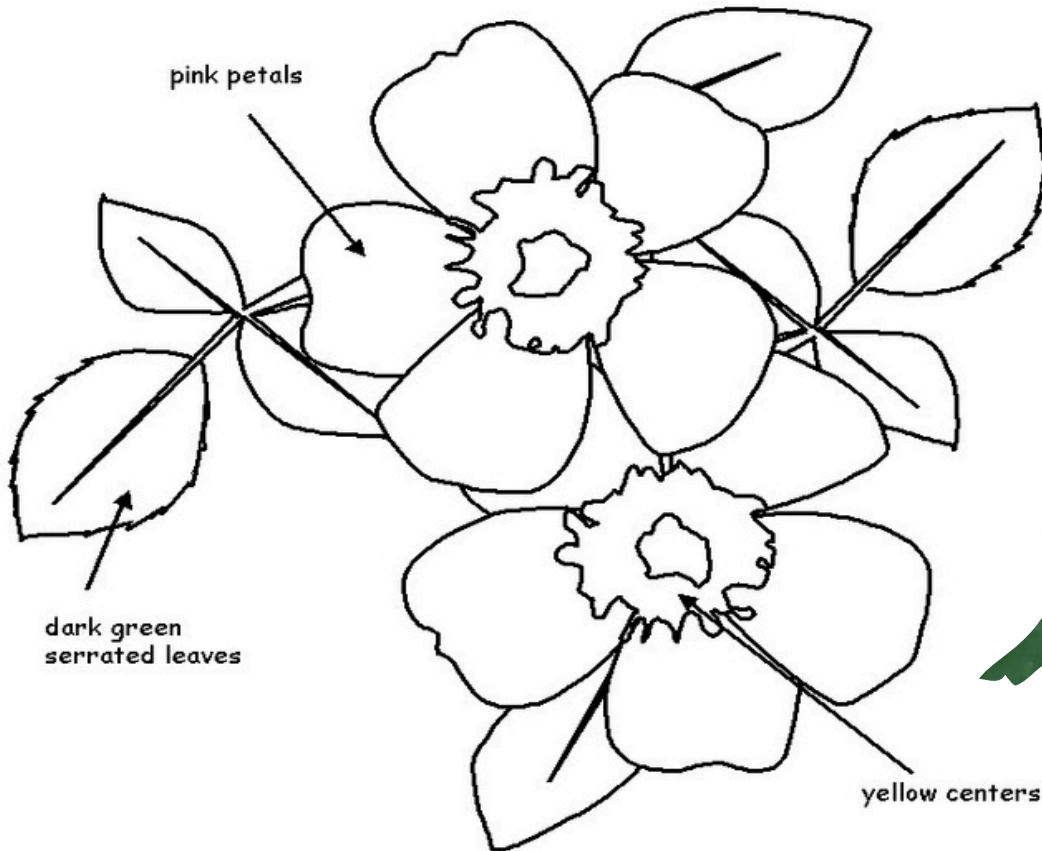
Provincial Fauna

The provincial bird of Alberta is the Great Horned Owl. Colour the image below!



Provincial Flora

The provincial flower of Alberta is the Wild Rose. Colour the image below!



ALBERTA

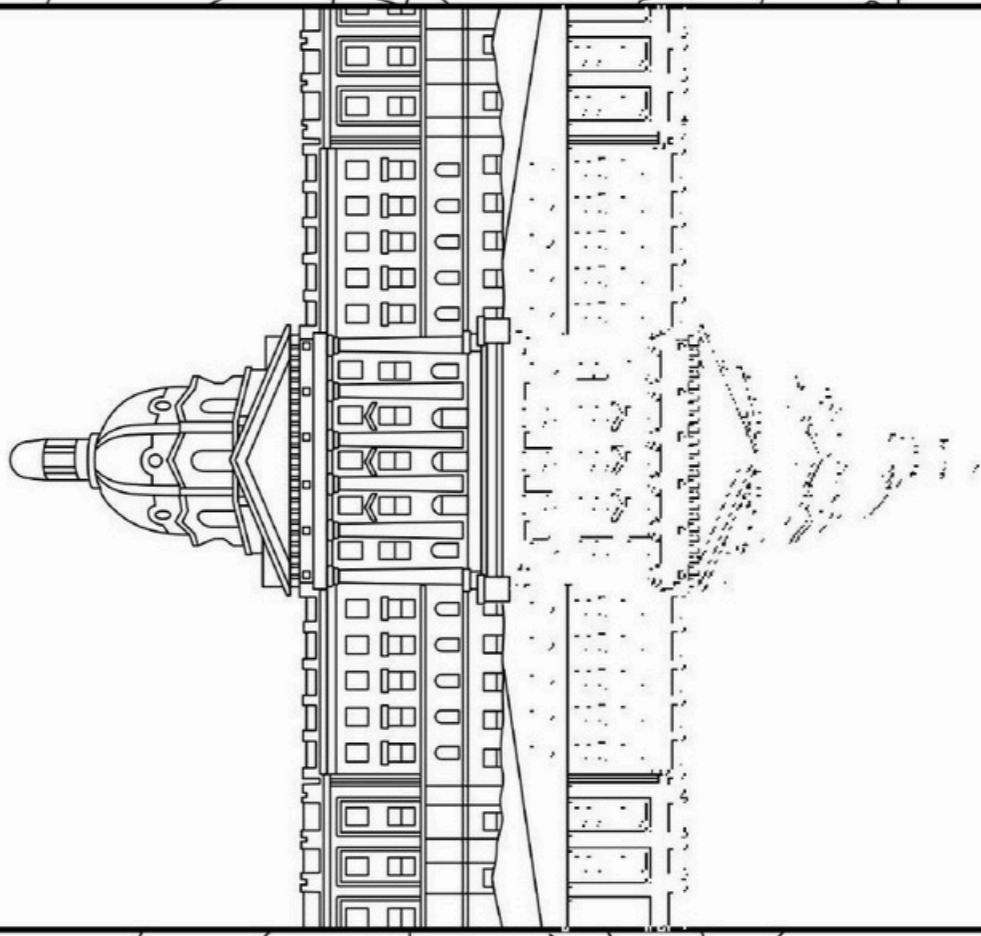
in

Colour



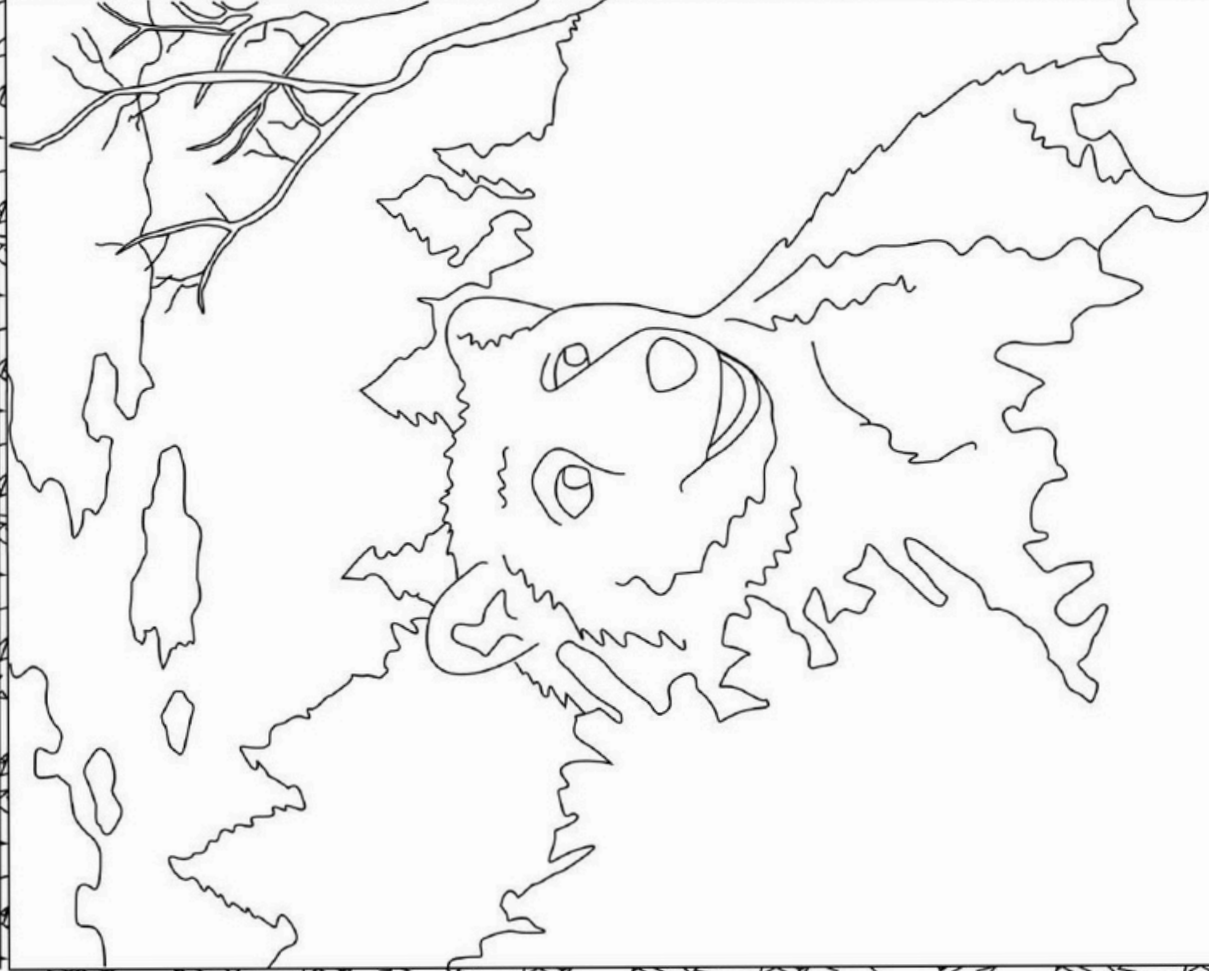


Edmonton is the Capital of Alberta, and this building is the legislature of Alberta. There are about 1,155,383 in the greater Edmonton area, which make it the sixth largest city in Canada. There are 83 regional representatives that govern Alberta from the legislature.



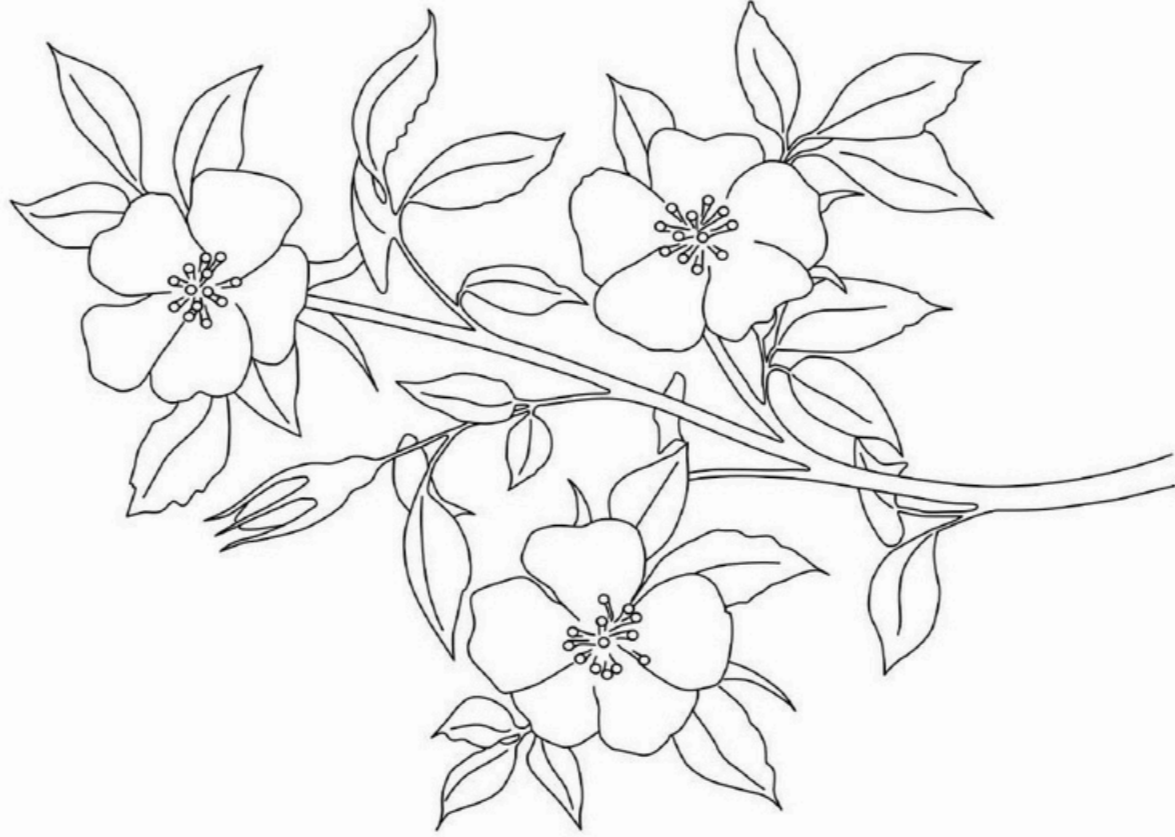


Grizzly Bear: The grizzly bear holds a special place for most people as one of nature's most fierce predators. These bears are powerful hunters, and they are at the top of the mountain food chain. Like many wild animals, Banff's grizzlies are in danger of becoming extinct.



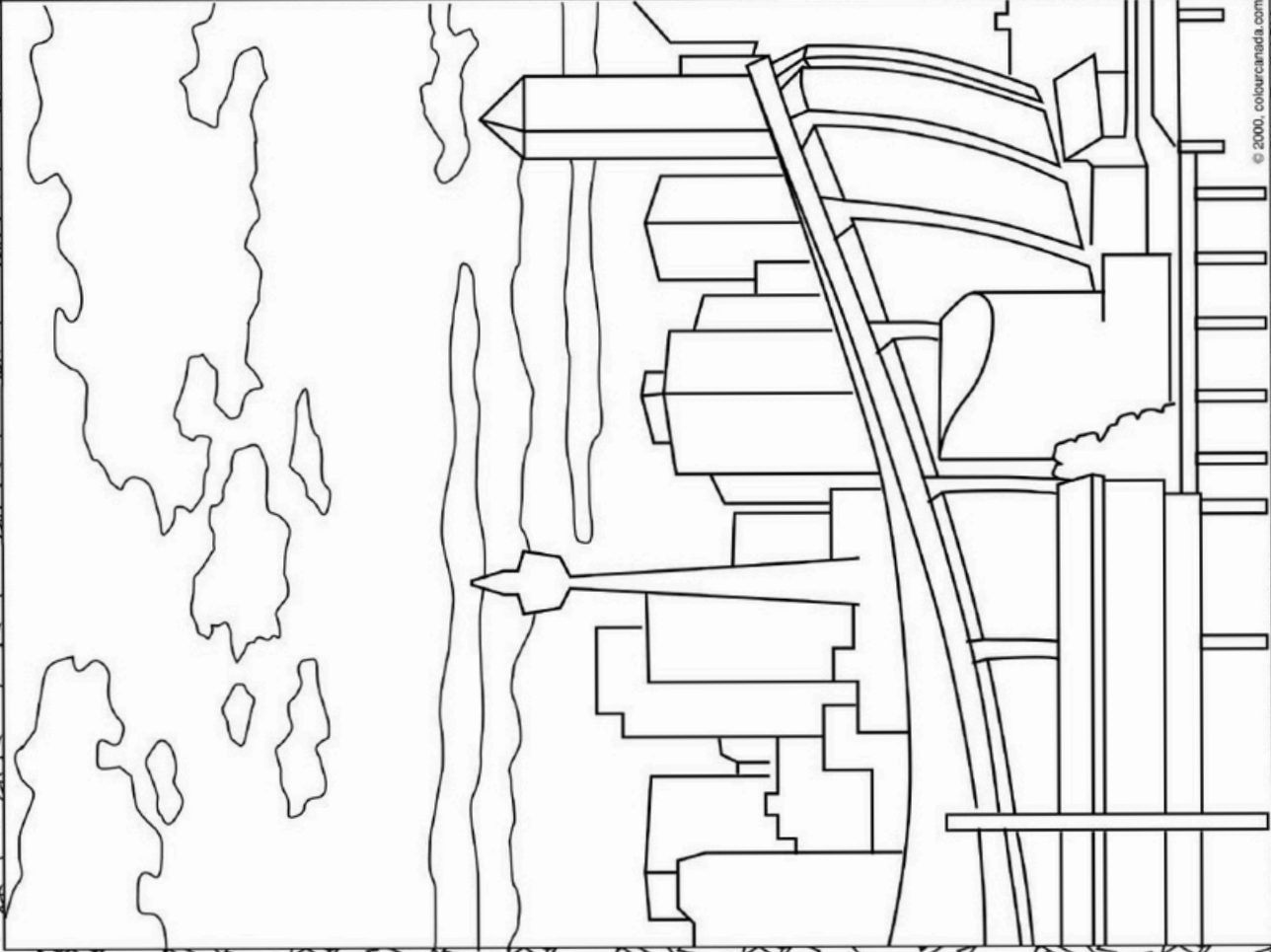


Wild Rose: Officially adopted in 1930, the wild rose was chosen by the schoolchildren of Alberta as the province's floral emblem. Wild Roses bloom as soon as the snow melts and are an excellent source of Vitamin C. They are an important food source for many wild animals.



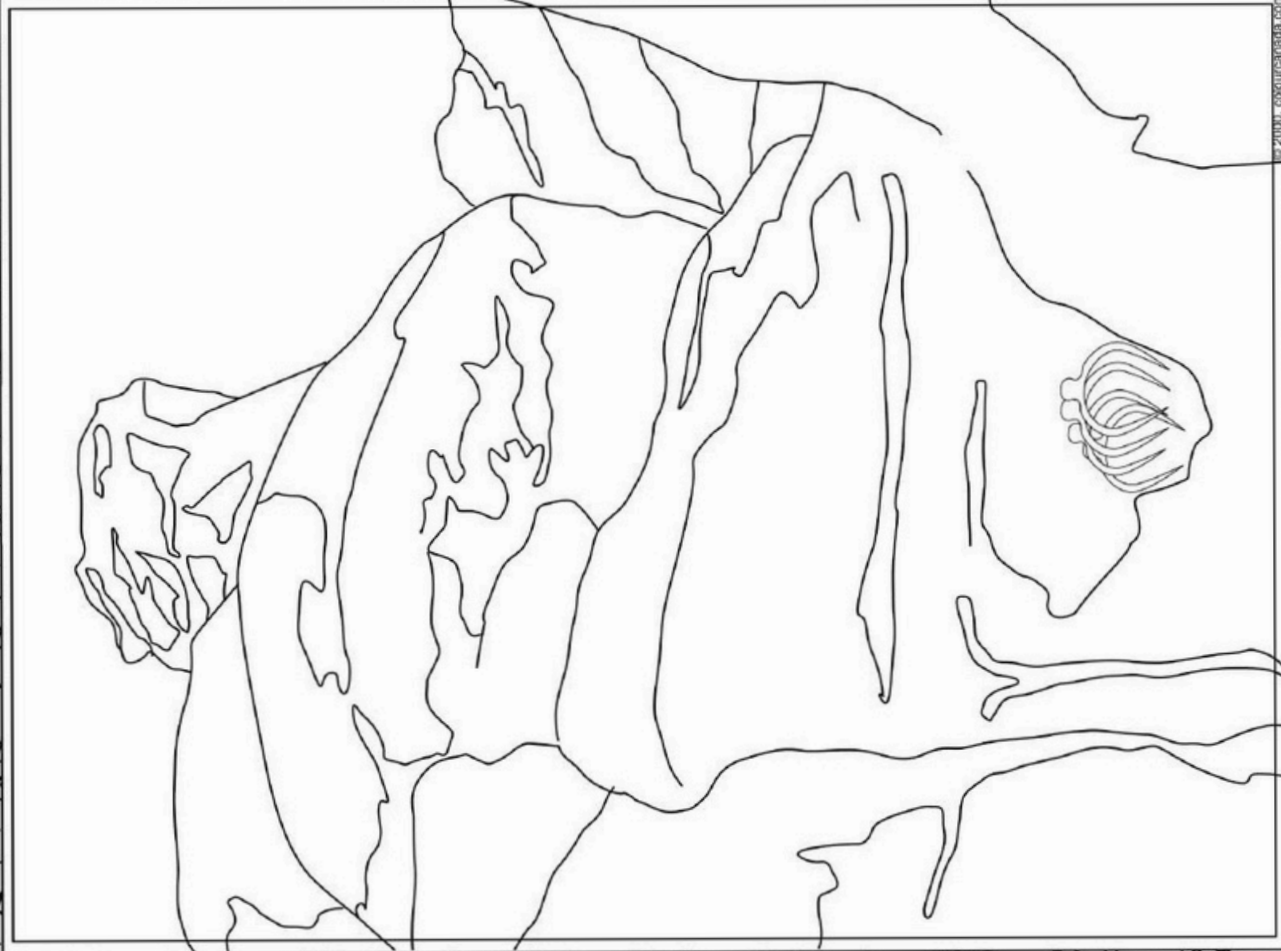


Calgary: Thinking big and then doing it is just part of life in this sprawling city in the long shadows of the Canadian Rockies. It started off as a pioneer outpost along the Bow River, and grew slowly for decades. But then an exploration drill hit oil in the area, and Calgary hasn't looked back.





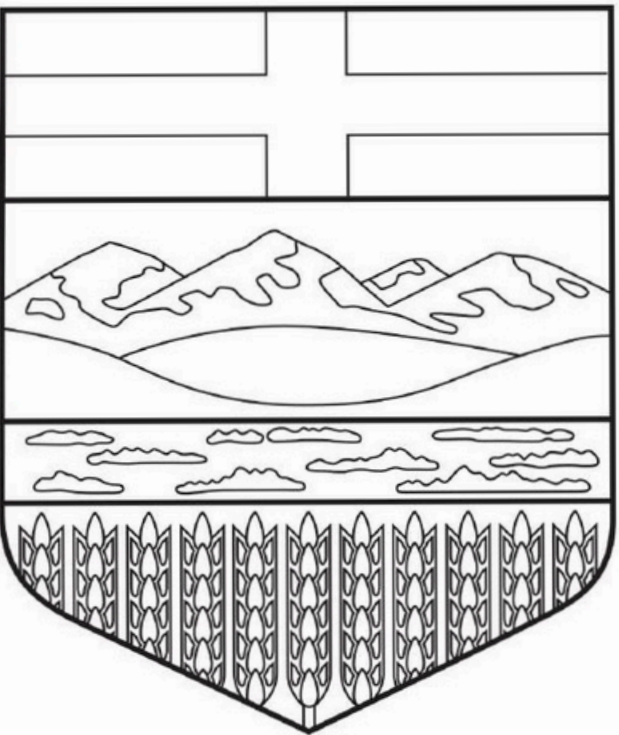
Badlands: In the heart of Alberta lies the "badlands," an area that looks like the Arizona desert. The badlands are home to a vast prehistoric graveyard. Many of the dinosaur fossils found in Canada come from the Alberta badlands.



© 2001 COSCIENCE.COM



Alberta's Flags: The Cross of St. George on top and scenes of the country under the cross. The scenes are of mountains, foothills, prairie, grain fields and even a beaver. The lower portion of the shield shows the floral emblem of the province which is the wild rose.





The Great Horned Owl: is one of Canada's most common birds of prey, notable for its large size and prominent ear tufts or "horns." This predator has big yellow eyes, a curved beak & claws, and long fluffy feathers. Its tends to be brown or grey-brown and is Alberta's Provincial Bird.

